

***SOUTHWESTERN* Regional Police Department**

York County - Pennsylvania
6115 Thoman Drive Spring Grove Pennsylvania
(717) 225-1333
www.swrpd.org

Serving the communities of

Heidelberg Township

Manheim Township

North Codorus Township

Spring Grove Borough



ANNUAL REPORT Review of 2017

Submitted to the Police Board by Chief Gregory M. Bean
May 9, 2018

"Progressive and Professional"

Heidelberg Township Representatives
Manheim Township Representatives
North Codorus Township Representatives
Spring Grove Borough Representatives

Matt Bollinger and Terry Frock
Larry Miller and Scot Stambaugh
Rodney Shearer and Rick Lint
Dolores Aumen and Beverly Hilt

****Stay connected with Southwestern Regional Police for all our messages; media releases, road closings, general news. Go to www.SWRPD.ORG, look for "SIGN UP FOR NEWS ALERTS." The information will come to your cell phone via text or email or both.***



The department's station is centrally located within our 70 square miles of patrol area; situated in Heidelberg Township since 2003. This photo shows the 135 American flags placed in our front yard for the National Police Week representing the number of police officers killed in 2017.

The Southwestern Regional Police Department is very different from most of the State's 1,200 police agencies. We may look the same on the surface; as we provide full-service, full-time policing to our 18,000 residents. What is different is our legal structure that holds us together. As one of the State's 36 regional police departments, we are an independent entity and legally described as a "Political Subdivision of the Commonwealth." We were established in 2002 and since 2003, we have provided police services to four municipalities. These municipalities provide our funding based mainly on their population count. They receive patrol time hours based on that percentage of funding provided; a fair and efficient way to provide service. We are proud to say that we are one of the most efficient and cost effective regional departments in the State. Our municipalities provide us input and leadership with two representatives from each community that encompasses our police board.

This ***Annual Report – Review of 2017***, will provide some statistical analysis that will assist the reader in what we did and how we did it; both from a regional perspective and from the municipal level. As the chief with the department, if you have a question regarding this information or any other question regarding our department, please feel free to reach me at the following: (717) 225-1333 ext. 101, or at gbean@swrpd.org. Thank you for your interest in our department.

- Gregory Bean

A Review of Significant Issues In 2017

- **The Cost of Policing** – The cost of any government service is looked at very closely by our residents; and should be! We feel that we are a very transparent entity of your government and want to share our cost analysis. We are very proud of keeping costs down for our residents and being listed again in a State study as being one of the least expensive regional departments in the State of Pennsylvania. Here are some questions and answers about the cost of our services.

How are the costs distributed to our four (4) municipalities? – Each municipality simply gets what they pay for; as an example, Manheim Twp. pays 16.32% of our budget. They then receive 16.32% of the overall time that our officers provide; or 85 hours per week. We track the time each day to be able to provide a very fair way of providing regional services (see the last page for each municipality's share of the time and budget).

What are the costs of the department to each resident and where does the money come from? – We receive the funding for the department from our four (4) municipalities, three townships and one borough. The money is from property taxes and earned income tax that the townships and the borough receives; not to be confused with school and county taxes. The easiest way to let residents know what our costs are is to divide our budget by the number of residents that we serve; which comes to, on average, \$115 per resident.

What are the benefits of a regional department regarding costs? – Its pretty simple. We share our costs in regard to the expense of police officers and our equipment. We move our resources around to where they are needed at any given time and are therefore able to be very efficient on providing services. Not every municipality in our area is going to be interested in regionalized police services, but we believe it's a great way to get what you pay for and great way to provide the most important service that a government needs to provide to its residents; public safety.

Costs are always rising. What is being done to control costs? – We are pleased to say that over our last four budgets (2015-2018), we have an average increase each year of only 1.22%. That certainly is better than the cost of living average and we think our police board's conservative approach to spending is very beneficial to our residents.

It should also be noted that we are always looking for ways to decrease costs. One of those ways is to join with other municipalities. This "dilutes" and therefore decreases the cost to our own municipalities and can provide low cost policing to a community that doesn't have their own police service; or can often reduce the ever increasing cost for a municipality that currently has their own department. Our board continuously looks ahead at decreasing costs and therefore looks at joining others for these tax saving opportunities.

- **Traffic Safety Concerns are #1 with our Residents** – The most consistent concern from our residents are related to traffic issues. It may be that traffic is exceeding the speed limit in front of their homes or that are driving and they call us about another driver's poor driving. Either way, we hear you! We are consistently attempting to slow traffic or locate the aggressive driver. We have a variety of ways to improve driving on our streets. One is for our Officers to enforce all State traffic laws. To that end, Officers stopped 2,012 vehicles in 2017. Statistically, drivers become safer in their driving habits after being stopped by an Officer. An additional benefit of a traffic stop is that crime decreases in communities when policing takes an active role in traffic enforcement. These are two important reasons why we spend a lot of our time working on traffic problems.

Other methods to improve traffic safety are:

-Electronic Tickets are now being used by our Officers – Officers are now able to scan a driver's license and registration card in their patrol vehicle. This captures the driver's information very quickly and accurately in order to assist the officer in writing the citation or warning. This generally allows the traffic stop to proceed more quickly and all involved to leave from the roadway location quicker; which makes it safer for all involved.

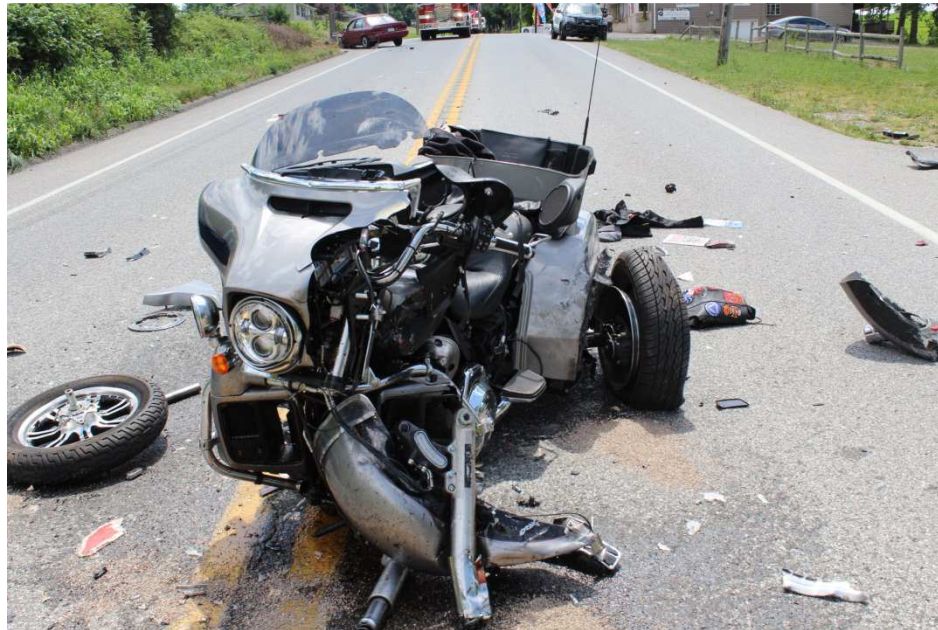
-StealthStat – a non-descript small box which affixes to a pole. Inside, a radar unit records the speeds of each vehicle that goes by, and the time of day. We then download the stats to get an idea if there is a speed problem and the time of the day that the problems are occurring. Call us if you want a survey for your neighborhood.

-Speed Trailer – Your speed flashes on a large board as you drive by. This is a great way to slow traffic by instantly letting the motorist know how fast they are traveling – without implementing a penalty system!

-Sign Trailer – New for the department. This is a trailer that can be placed along roadways to warn motorists of upcoming traffic pattern changes or other traffic updates.

-Traffic Alerts sent to your phone or computer – By going to the department's web page (www.swrpd.org) , you can sign up to receive messages from the department via a free service called Nixel. Often road closures or other community concerns or information is provided instantly from your police department.

Zero Traffic Deaths in 2017– Our four (4) communities experienced zero (0) traffic related deaths this past year. That is certainly good news. Our roadways can be dangerous as noted that for the three year period from 2014 – 2016, eleven (11) traffic deaths occurred in our region. The National Safety Council estimates nationally, 40,100 traffic deaths occurred last year. The numbers are down 1% from the previous year but experts say that it should be lower. Traffic deaths had been decreasing for many years due to better safety equipment in cars but distracted driving, such as the use of texting while driving, is slowing the good news. We will always make safer roads a priority.



The rider of this crashed motor trike narrowly escaped serious injury, or worse, when an intoxicated motorist ran into the trike, causing it to be pushed into the path of a bus in Heidelberg Twp. The intoxicated motorist was arrested for the crime. Southwestern Officers arrested 73 persons for DUI charges in 2017; up 10% from the previous year.

A Review of Significant Department Achievements and Challenges 2017

The department is proud to look back over 2017 and review our highpoints in so many varied areas. Like any good organization, successes have mostly to do with the good people within that group. Also like any organization, we dealt with challenges that inevitably happen. HOW we deal with those challenges defines how good we are. Here's a look back:

Achievements

Community Policing Efforts & Community Involvement – Back in 1829, Sir Robert Peele wrote the basic principles of policing; creating the first “modern” police department in London. One of his mandates for a community is for the people of the community to be involved in solving their issues and problems; and that the police should be the professional group that has a good relationship with their communities in order to accomplish this goal. One of his mandates is as follows:

“The police at all times should maintain a relationship with the public that gives reality to the historic tradition that *the police are the public and the public are the police*; the police are the only members of the public who are paid to give full-time attention to duties which are incumbent on every citizen in the intent of the community welfare.”

To that end, we are very pleased to be involved with and in support of the many exciting community events in the Spring Grove area. To include, *Paws, Pubs, and Grubs*, *Christmas Tree Lighting in the Circle*, *National Night Out Against Crime*, *Jefferson Carnival*, and a premier event, *Smoke in the Grove* BBQ competition. These events are for all ages and allow police officers and residents to form positive relationships. In addition, we attend church functions and daycares, Scouting programs and school functions; to include career day events at both the Spring Grove and South Western School Districts and nearly daily visits to our two elementary schools.



Officers Goodling, Greene, Bean, and Poplin participated in Smoke in the Grove competition which pitted 12 police and fire departments against each other in a wing competition. Residents were invited to test the BBQ and be the judges.

We are also pleased to be able to support the following three (3) programs:

- 1) Drug Prescription Drop-off Program – Sponsored by the York County Solid Waste Authority, a secure “mail-box” type piece of equipment is available in our lobby for those that want to rid their homes of prescription drugs that are not longer needed. The lobby is open during the week, 0800 AM – 430 PM.

- 2) Cell Phones for Soldiers Program – This Nationally recognized program accepts used cell phones and takes the valuable parts of the phone for recycling purposes. The income that these parts generate is then put into a fund. The fund buys phone minutes that enlisted personnel use to allow them to call friends and family as they serve our country. Our front desk will accept your used cell phones, during the same hours as listed above.
- 3) Adopt a Highway Program – A PennDOT program, we have adopted a roadway in Heidelberg Twp. where our members and friends of the department clean the area of trash and debris on a voluntary basis. We have been a member of this program and performing this since 2009.

The Challenges

Drug Use in Our Communities - Our news outlets report almost daily on the problems that our society has with abusing drugs; both the legal and illegal forms. In addition to the health risks that the abuse of drugs causes the user, there are many other problems that are a result. It is estimated that more than a third of the calls that our officers respond to are a result of the abuse of drugs. This may be an intoxicated motorist crash, a domestic fight between parties because of money used for drugs, or many of our robberies and thefts are a result of the need for cash or property to obtain drugs.

The statistics below indicate that heroin use is only one form of the drug overdose problem. Abuse of prescription drugs accounts for almost half of the epidemic that we face. "Narcan" is the drug that police and medical personnel use to counter the effects of opioid drugs when we respond to overdose calls. Narcan is ineffective for drugs that are not opioid based.

Can we eradicate this devastating and deadly problem? We work with the community to do two things:

- 1) Educate residents of the problems that occur with these drugs and help parents understand and identify drugs if found in their homes.
- 2) We will enforce the laws that reduce the use of these drugs. We will charge individuals with the crimes associated with these drugs; and most importantly assist the the courts and the drug programs that can and do help individuals with addiction problems.

Challenges (cont).

DRUG OVERDOSE INFORMATION

Municipality	All Overdose Calls	Heroin Only	Narcan Used	Overdose Deaths
North Codorous Twp.	18	10	5	2
Spring Grove Boro	7	5	5	1
Manheim Twp.	7	3	2	1
Heidelberg Twp.	2	1	1	0
TOTALS	34	19	13	4

Our Police Personnel Sometimes Run Thin – Ask any one of our officers what our biggest challenge is and he or she will tell you that it is definitely staffing shortages! We have less officers than the standard staffing formulas suggest. When officers cannot be at work for a varied number of reasons, the system becomes stressed. Extra hours for each employee is what becomes required.

The advantage of not carrying extra personnel is that our bottom-line for personnel expenses tend to be very low, very efficient. As compared with the 37 other regional police departments in the State, we are ranked by the State as being one of least expensive regional departments (who utilize only full-time employees). Our per capita costs, or per resident costs, cost \$115 per resident, per year.

Some of the Most Different Incidents for the Year 2017

We feel like we have an interesting job. Here's a few of the different incidents that we were involved in this past year.

- On Thurs. Aug. 31 at approx. 1130 AM, a Delaware man crawled from the driver's seat to the rear hatch of a moving vehicle when a police officer attempted to stop his vehicle. The person in the passenger seat took over the driving all while the vehicle was traveling at over 30 MPH. – not to mention the child in the rear seat. When the vehicle did stop, the officer suspected some type of problem and was allowed to check the interior of the vehicle. It was at this time that the officer discovered a 39 YOA male hiding under a blanket in the hatch area of the vehicle. The investigation revealed that the driver had a theft warrant in the State of MD. and that he was driving the vehicle, crawled to the rear hatch area, and had another passenger seated in the front passenger seat, take over.

- Pig in a police car - During the early morning hours on Friday April 7, a runaway pig was attempting to enter a home in North Codorus Twp. when he was subsequently captured by the cops.



As is seen in the photo, the pig took a ride in a patrol vehicle to the SPCA in York and that agency fed and cared for the pig until its owner was located.

Statistics Provide a Good Idea of what is happening in your community - 2017

*REGION-WIDE Statistics – ALL ACTIVITIES (*personnel shortages effected these statistics)*

	Part I Crime (more serious)	Part II Crime (less serious)	Service Calls	Accidents	TOTAL CALLS	Traffic Citations & Warnings	Criminal Charges
2014	138	262	3146	301	3847	1495*	384
2015	109	309	3560	316	4014	1404*	446
2016	139	334	3308	313	4094	2044	376
2017	119	349	3534	300	4045**	2012	394

****includes all of our calls for service– to include when we were requested to respond outside of our jurisdiction**

REGION-WIDE REPORTED "PART I" CRIMES

SEVEN (7) Year Trends (the most serious types of crime)							
Crime	2011	2012	2013	2014	2015	2016	2017
Criminal Homicide	3	1	0	0	0	0	1
Assault	8	9	15	22	11	11	10
Motor Vehicle Theft	7	3	2	2	2	4	6
Arson	0	1	0	0	0	0	1
Rape (*in 2016, all sexual assaults included)	6	1	2	4	4	29*	24*
Robbery	0	2	0	1	1	0	3
Theft	127	91	99	96	65	81	60
Burglary/Entry into Building	36	17	22	13	26	13	10
Total	187	125	140	138	109	135	115

REGION-WIDE REPORTED "PART II" CRIMES

SEVEN (7) Year Trends (less serious crimes but more numerous)							
Crime (partial listing)	2011	2012	2013	2014	2015	2016	2017
Fraud	44	19	28	21	27	36	41
Vandalism	84	79	67	58	57	45	54
Narcotics Violations	32	18	28	16	24	34	43
Harassment	71	56	58	42	42	53	37
DUI	72	56	61	40	50	66	73
Totals	303	228	242	177	200	234	248

INDIVIDUAL MUNICIPALITY STATISTICS – THREE (3) YEAR PERIOD

Heidelberg Twp. – population 3,077

	Part I Crime	Part II Crime	Service Calls (including crashes)	Crashes (# Fatal)	TOTAL CALLS	Traffic Citations & Warnings	Criminal Charges
2015	16	44	709	90 (1)	769	166	61
2016	23	56	759	99 (0)	838	236	48
2017	19	44	681	87 (0)	744	218	68

Manheim Twp. – population 3,458

	Part I Crime	Part II Crime	Service Calls (including crashes)	Crashes (# Fatal)	TOTAL CALLS	Traffic Citations & Warnings	Criminal Charges
2015	8	40	468	41 (1)	516	402	139*
2016	12	38	498	43 (0)	548	601	52
2017	13	39	487	34 (0)	539	552	36

*100 of these charges were brought against one defendant

North Codorus Twp. – population 9,048

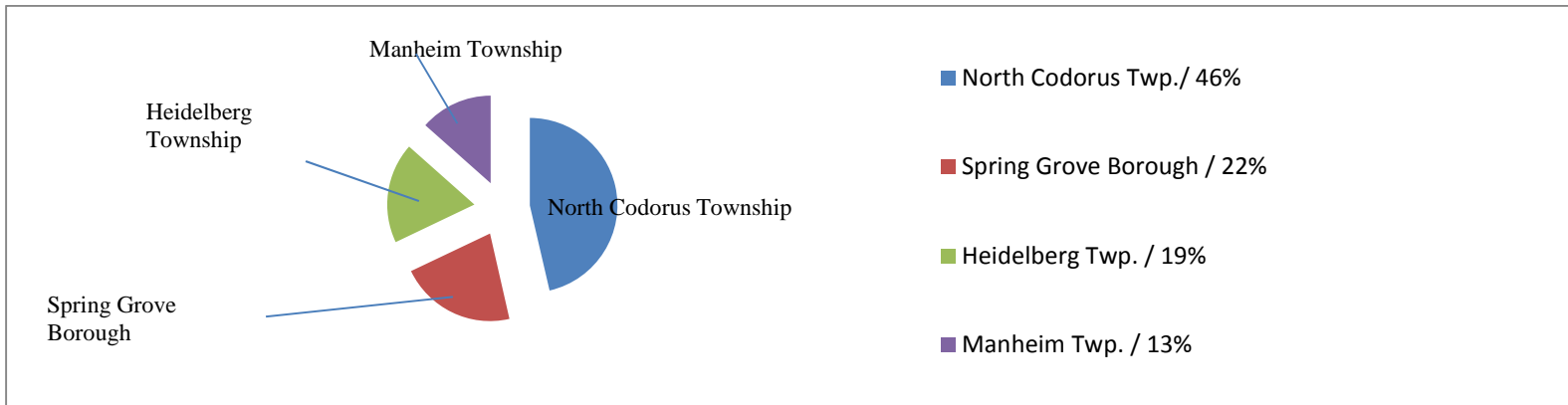
	Part I Crime	Part II Crime	Service Calls (including crashes)	Crashes (# Fatal)	TOTAL CALLS	Traffic Citations & Warnings	Criminal Charges
2015	44	134	1630	130 (0)	1808	703	155
2016	59	134	1654	121 (1)	1847	981	157
2017	48	156	1653	143 (0)	1857	997	155

Spring Grove Borough – population 2,170

	Part I Crime	Part II Crime	Service Calls (including crashes)	Crashes (# Fatal)	TOTAL CALLS	Traffic Citations & Warnings	Criminal Charges
2015	41	91	733	55 (0)	865	133	91
2016	45	106	666	50 (0)	817	224	119
2017	39	110	713	36 (0)	862	267	135

2017 Calls By Municipality / TOTAL 4,002 (also, 43 generated from outside jurisdictions)

North Codorus Twp. 1,857
 Spring Grove Borough 862
 Heidelberg Twp. 744
 Manheim Twp. 539



Individual Crimes by Municipalities
Most Significant Reported Crime

Heidelberg Twp.		Manheim Twp.		North Codorus Twp.		Spring Grove Borough	
	'16/'17		'16/'17		'16/'17		'16/'17
Murder	0 / 0	Murder	0 / 0	Murder	0 / 0	Murder	0 / 1
Robbery	0 / 0	Robbery	0 / 0	Robbery	0 / 0	Robbery	0 / 3
Assault	1 / 2	Assault	1 / 2	Assault	8 / 4	Assault	1 / 4
Burglary	0 / 2	Burglary	1 / 1	Burglary	7 / 4	Burglary	5 / 3
Thefts	15 / 10	Thefts	9 / 5	Thefts	30/24	Thefts	27/21
Vehicle Theft	0 / 1	Vehicle Theft	0 / 3	Vehicle Theft	3 / 2	Vehicle Theft	1 / 1
Sex Offenses	8 / 5	Sex Offenses	1 / 2	Sex Offenses	12 / 16	Sex Offenses	8 / 4
Arson	0 / 0	Arson	0 / 0	Arson	0 / 0	Arson	0 / 1
Fraud	8 / 5	Fraud	4 / 12	Fraud	18/19	Fraud	6 / 5
Criminal Mischief	9 / 5	Criminal Mischief	6 / 8	Criminal Mischief	9 / 18	Criminal Mischief	21 / 23
Narcotic Viol.	4 / 5	Narcotic Viol.	3 / 6	Narcotic Viol.	16 / 17	Narcotic Viol.	11 / 15
DUI	10 / 20	DUI	15 / 7	DUI	36 / 34	DUI	5 / 12
Harassment & Disorderly Conduct	17 / 4	Harassment & Disorderly Conduct	6 / 3	Harassment & Disorderly Conduct	25 / 23	Harassment & Disorderly Conduct	40 / 40
Trespassing	2 / 1	Trespassing	2 / 0	Trespassing	7 / 9	Trespassing	4 / 4
Child Abuse	0 / 0	Child Abuse	0 / 0	Child Abuse	8 / 12	Child Abuse	5 / 6

CURRENT VEHICLE STATUS

PATROL USE VEHICLES	2017 ENDING MILEAGE	PROJECTED MILEAGE AT END OF 2018	RECOMMEND REPLACEMENT
#124 – 2010 Crown Vic (spare)	171,000	178,000	Recommend replacement in 2018
#125 – 2011 Crown Vic	170,000	195,00 (if not placed as a spare)	Recommend purchase of a new vehicle so that this becomes spare
#126 – 2013 Dodge Charger	141,000	170,000	
#128 – 2014 Dodge Charger	95,000	120,000	
#129 – 2015 Dodge Charger	58,000	82,000	
#134 – 2017 Ford Utility	15,000	35,000	
#135 – 2017 Dodge Charger	21,000	45,000	
NON-PATROL USE VEHICLES			
#133 – 2017 Ford Interceptor – unmarked detective vehicle	5,000	15,000	
#116 – '07 Suzuki Motorcycle	2,300	3,000	
#120 – 2009 Chev. Suburban	34,000	38,000	
#127 – 2013 Dodge Durango (Unmarked Chief vehicle)	57,000	68,000	
# 131 – Ford – Used-Unmarked	100,000	107,000	
#117 – Roll-On Trailer	Not Counted		
#118 – Radar/Speed Trailer	Not Counted		
#121 – Enclosed Trailer	Not Counted		
#123 – Road Barrier Trailer	Not Counted		
#132 – Message Trailer	Not Counted		

MOST RECENT SEVEN YEAR PERIOD of DEPARTMENT MISCELLANEOUS STATISTICS

REGION-WIDE STATS	2017	2016	2015	2014	2013	2012	2011
Sworn F/T Officer Positions	14	14	14	14	14	14	14
Civilian F/T & P/T Positions	1 F/T, 1 P/T	1 F/T, 1 P/T	1 F/T, 1 P/T	1 F/T, 1 P/T	1 F/T, 1 P/T	1 F/T, 1 P/T	1 F/T, 1 P/T
# of Ofcr.'s Separated from the department	0	0	1	1	0	1	0
# of Officers Hired	0	0	2	0	1	0	1
Calls for Service	4045	4,094	3,978	3,847	4,049	4,335	4,577
Criminal Charges	394	376	446	384	459	406	427
Citations	727	647	540	461	966	987	862
Traffic Written Warnings	1,285	1,397	864	1,034	1,391	1,345	1,388
Total Traffic Contacts	2,012	2,044	1,404	1,495	2,357	2,332	2,250
Parking Tickets	16	36	23	47	73	27	41
# of court appearances by officers	297	313	179	232	188	230	185
Internal Affair Investigations	1	1	0	0	0	2	0
# of Community Service Officers (volunteer)	3	1	1	1	3	2	3
Community Service Officer Hours	35	18	11.5	14.5	123.	127.25	44.5
# of Police Chaplains (volunteer)	2	2	1	1	1	1	2
Police Chaplain Hours	50	55	50	60	50	70	105
Police Chaplain call-outs	2	1	3	3	3	5	3
Total Vehicle Mileage	193,000	166,000	177,000	170,000	177,000	189,000	174,000
Days-off Due to Work Related Injuries	4	16	2	0	0	4	0
Patrol Time vs. Investigative Time	64%/36%	64%/36%	57%/43%	55%/45%	48%/52%	53%/47%	49%/51%

Allotted Hours per Municipality

Municipality	Percentage of Total Department Time	Hours	
		Week	Year
Heidelberg Twp.	18.35%	96	4,992
Manheim Twp.	16.32%	85	4,420
North Codorus Twp.	48.43%	253	13,156
Spring Grove Borough	16.90%	86	4,472
TOTALS	100%	520	27,040

Department Personnel that Served in 2017

Gregory M. Bean	Chief of Police	Administration
L. Layden	Detective Sergeant	Investigations
J. Greene III	Sergeant	Patrol
J. Stalcup	Sergeant	Patrol
D. Brillhart	Officer	Patrol
M. Matthews	Officer	Patrol
S. Harrison	Officer	Patrol
B. Lindenmuth, Jr.	Officer	Patrol
B. Goodling	Officer	Patrol
B. Nolan	Officer	Patrol
H. Rowland	Officer	Patrol
N. Johnson	Officer	Patrol
S. Sterner	Officer	Patrol
J. Poplin	Officer	Patrol
Velda K. Nickell	Administrator	Administration
Montez M. Sattman	Police Clerk	Administration